



WESTCONNECT TPPL WORKBOOK

USER'S GUIDE & TOOL OVERVIEW

FEBRUARY 28, 2022

Contents

1.0	Introduction	1
2.0	Acquiring the TPPL Workbook.....	1
3.0	Enabling Workbook Macros	3
4.0	The “Control” Worksheet	4
4.1	First Step: Logging into the TPPL Workbook.....	4
4.2	Other Boxes on the “Control” Worksheet.....	5
5.0	The “All Projects” Worksheet.....	5
6.0	The “Project Entry” Worksheet	5
6.1	Modifying Existing Projects.....	6
6.2	Entering New Projects.....	7
6.3	Submitting Updates to Energy Strategies.....	7
6.4	Additional functionality available on the “Project Entry” Worksheet.....	8
7.0	The “Report Page” Worksheet	9
8.0	Process for Updating Master Project List	11
Appendix A: Project Data Fields.....		12
	Data Required for All Projects.....	12
	Data Required for Independent Transmission Developers	15

1.0 Introduction

The purpose of the WestConnect Transmission Plan Project List Workbook (TPPL Workbook) is to facilitate the collection of and updates to transmission related projects which will inform the development of the Base Transmission Plan in each WestConnect biennial regional transmission planning cycle. Refer to the [WestConnect Order 1000 Business Practice Manual](#) as well as the latest WestConnect Regional Study Plan for more information regarding the Base Transmission Plan.

All transmission owners and developers that have identified a need for a transmission-related project within the WestConnect footprint are responsible for entering new project data and updating existing project data in the TPPL Workbook. These entities are referred to as “Sponsors” in the TPPL Workbook and representatives of Sponsors are referred to as “WestConnect Users” or “Users” in this guide.

[Energy Strategies](#) will be responsible for promptly updating the TPPL Workbook when notified and maintaining the “master” TPPL Workbook on the [TPPL Web Page](#) on the WestConnect website.

2.0 Acquiring the TPPL Workbook

A blank TPPL Workbook is posted on the WestConnect website at this location:
<http://regplanning.westconnect.com/tppl.htm>.

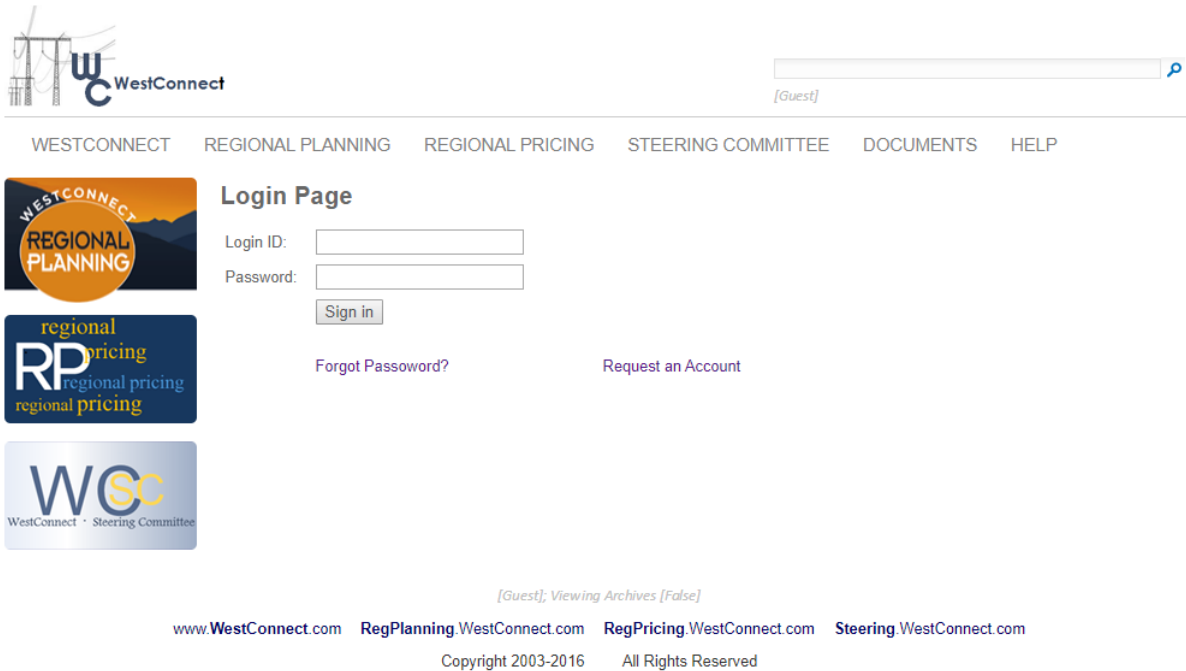
The rest of this section describes how WestConnect Members and NDA Signatories can access the non-public TPPL Workbook which contains previously submitted project data.

The WestConnect TPPL Workbook will be available to WestConnect Members and NDA Signatories behind a secured site accessible via the [TPPL Web Page](#) on the WestConnect. A username (i.e., e-mail address) and password will be required to access this site. Users requesting access to this site must be an authorized employee or representative of a Sponsor. As previously mentioned, a “Sponsor” is an entity which can be either a transmission owner, or developer, that has identified a need for a transmission related project within the WestConnect footprint. Below is the process for requesting and receiving access to TPPL Documents:

1. A User can request a login by clicking on the “Request a Log In” link on the [TPPL Web Page](#) or by contacting [Energy Strategies](#) directly.
2. [Energy Strategies](#) will verify that the requestor is an authorized representative of a Sponsor.
 - a. If WestConnect staff and [Energy Strategies](#) accept the new requestor’s credentials, the information will be forwarded to the website administrator to create a user account. The User will receive a notification email containing a password that indicates they now have permission to access the secure area containing the TPPL documents.
 - b. If the User can’t be verified as an authorized representative of a Sponsor, then the request for a username and password will be denied.
3. After the User receives a password, the User can login via the [TPPL Web Page](#) and have access to the TPPL documents.
4. To log in, hover over "Documents" in the top right, then choose "Login".

After logging into the secure site, the User will be able to download the latest version of the TPPL Workbook. The User can double-click on the file and chose the “Save” option. The User should then save the file to a location that is not considered temporary. For example, the TPPL workbook can be saved to a local drive such as C:\User\My Documents.

If the User chooses the “Open” option, **do not** continue to modify the TPPL Workbook without first saving the workbook to the User’s local drive. Otherwise, project data updates may be lost.



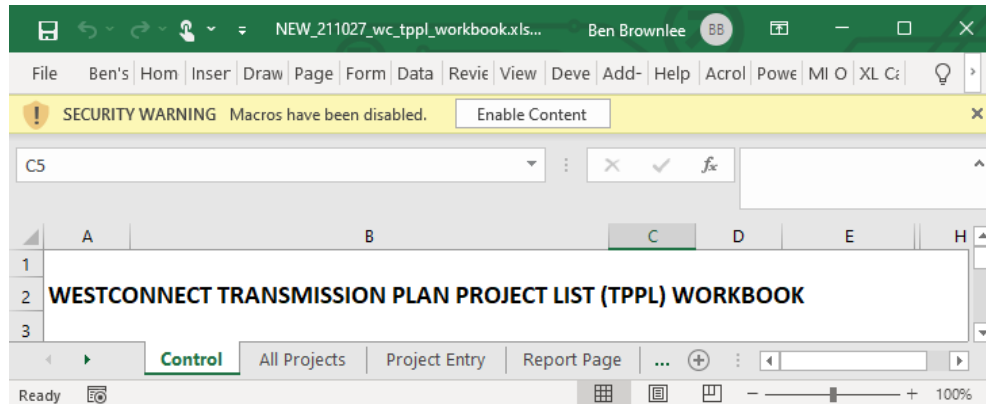
When downloading of the latest TPPL Workbook has been completed, the User should log out of the secured area by clicking on “Logout”.

[Energy Strategies](#) using the email address shown above.

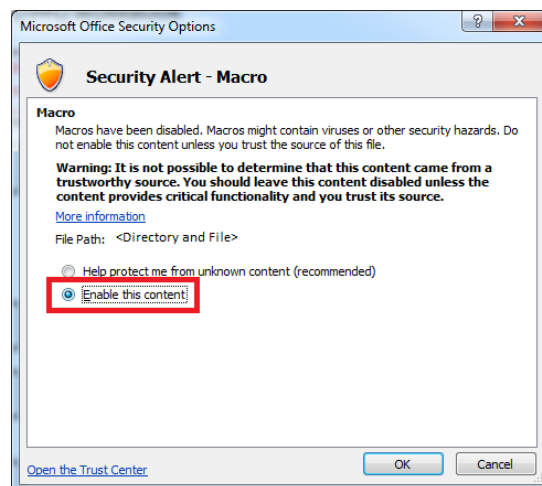
3.0 Enabling Workbook Macros

The functionality of the TPPL Workbook is achieved using Visual Basic “macros”, which must be enabled within Excel by the User after opening the TPPL Workbook. Please contact [Energy Strategies](#) if the below instructions don’t work or for further instructions that may involve your IT department. The TPPL Workbook has been developed in Excel 2007 and tested for use with Excel 2013.

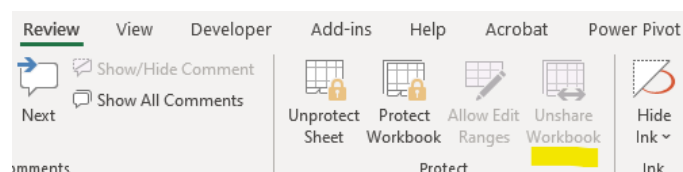
Enable macros by clicking “Options” in the Security Warning prompt located below the menu bar in Excel. If you open the TPPL Workbook using “Open” from the Excel Menu, then you will be prompted to enable the macros upon opening the workbook.



After opening the “Options” menu shown above, click “Enable this content” (see screenshot below) and then click “OK”. Follow these steps every time you enter the macro-enabled TPPL Workbook.



Please do not use Excel’s “Share Workbook” capabilities because they prevent necessary TPPL Workbook macros from functioning.

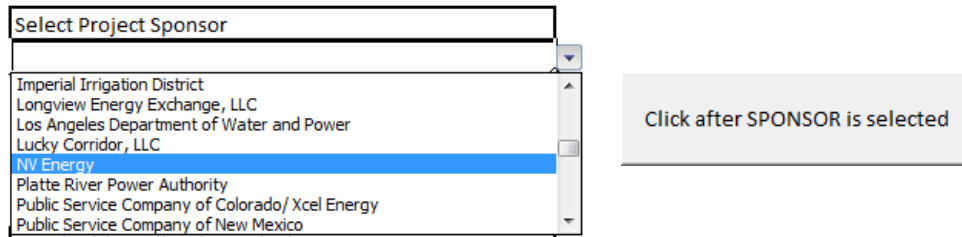


4.0 The “Control” Worksheet

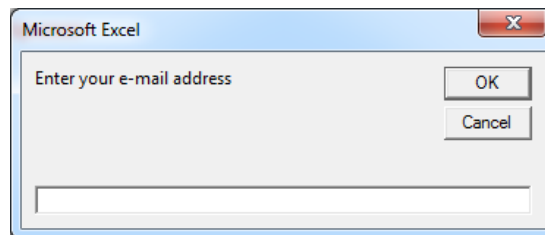
4.1 First Step: Logging into the TPPL Workbook

Upon opening the TPPL Workbook, the User will be brought to the **Control** worksheet. The below steps describe how the User must “log in” to the TPPL Workbook prior to any modification or use of the TPPL Workbook. Contact [Energy Strategies](#) if a Sponsor is missing from the Sponsor drop-down list.

1. The User must select their Sponsor from the drop-down list under “Select Sponsor” (left screenshot below). Then, the User must click the button as shown in the right screenshot below. The selected Sponsor determines which project data can be reviewed, added, and modified.

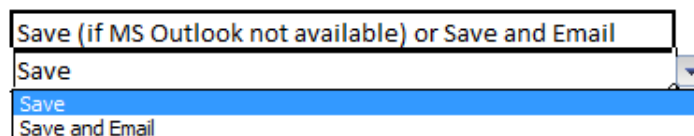


2. The User will be prompted to enter their email address:



6.0 will cover how this information can be updated and how updates can be sent.

6.3 for the full details):



- a. **Save and Email:** *This is the default option* and presumes the User’s default e-mail program is MS Outlook. When selected, TPPL Workbook will automatically reach out to MS Outlook in order to submit the TPPL change files created by the TPPL Workbook.

NOTE: Once a User has completed the above steps and project data has been updated (as covered in Section 6.0), the Sponsor can no longer be changed.

4.2 Other Boxes on the “Control” Worksheet

Data last sent by Sponsor: This tells the User the last time this file was changed and those changes were sent to [Energy Strategies](#). This cell will always be blank when downloading the file from the WestConnect website, and will only have a value once the User has saved changes to project data and submitted the changes to [Energy Strategies](#). A User cannot modify this cell.

Last data saved by Sponsor: The last time the TPPL Workbook was saved by the User. A User cannot modify this cell.

TimeStamp: When [Energy Strategies](#) uploaded the TPPL Workbook to the WestConnect website. If the current time is greater than 90 days after this Timestamp, then the TPPL Workbook macros will prompt the user to check the website for the most recent version of the TPPL Workbook. A User cannot modify this cell.

Energy Strategies Email Address: The email address at [Energy Strategies](#) to which TPPL change files will be sent. A User cannot modify this cell.

5.0 The “All Projects” Worksheet

The **All Projects** worksheet contains the list of all WestConnect transmission projects that have informed, or will inform, the development of the Base Transmission Plan in each WestConnect biennial regional transmission planning cycle. Once the User logs into the TPPL Workbook via the Control worksheet (see Section 4.0), this worksheet is filtered by the Sponsor selected by the User and initially sorted by Project ID number; however, a User may modify the filter to view more projects as well as filter on other columns, or sort the displayed projects on up to three levels of criteria. A User may also copy contents of selected cells to other files (Excel, Word, etc.).

The **All Projects** worksheet is “read only” and locked so that a User cannot make changes directly to the worksheet’s data. However, if the User double-clicks on a row, then the project data in that row will be loaded into the **Project Entry** worksheet for review and editing (see Section 6.0). Once changes have been made to project data and saved via the **Project Entry** worksheet, the modified data is highlighted in yellow in the **All Projects** worksheet. In addition, the highlighted cells contain comments which include the e-mail address of the User who made the change and a history of the data changes.

6.0 The “Project Entry” Worksheet

Once the TPPL Workbook is opened and a specific Sponsor has been identified, the User is taken directly to the **All Projects** worksheet where they can review all of the existing projects. A User can then double-click on any project line and the program will load that project’s information into the **Project Entry** worksheet for review and editing, as shown in the below screenshot. The next subsection will go over how to modify existing project, create new projects, and submit project changes. “**Appendix A: Project Data Fields**” provides the description of each field in the project data.

WESTCONNECT PLAN PROJECT DATA SHEET		
WestConnect Project ID	TBD-564	Locked
Project Name	ED5-Saguaro Northern	Req
Project Sponsor (Entity)	Western Area Power Administration - DSW	Locked
General Information		
Project Description	Replace all wood H-frame structures with 230 kv steel monopoles and existing 336 ACSR conductor with 1272 ACSR. This project is not currently in Western-DSW's ten year plan, though it may still be a conceptual consideration.	Req
Project Purpose	Increase load serving capability in Western's South of Phoenix system, rebuild failing 115 kv wood pole transmission line. Purpose is "Reliability" in a sense that it would be primarily needed to maintain continued service of existing transmission	Req

New Project

Next

Save Project

Previous

Cancel Edit

What Cells were Changed?

Print

Send

Spell Check

Set Range for Manual Print
(See cells A92:G95)

The User can review the data in this table and make any desired changes (see Section 6.1 for more details). A User can also move through the list of projects using these buttons:

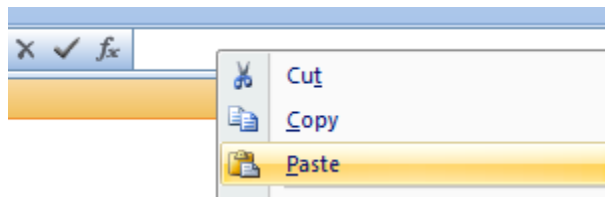
- Next

This button populates the table with the next project that is on the filtered list in the **All Projects** worksheet. If the User is on the last project in the list, clicking Next will populate information from the first project on the filtered list.
- Previous

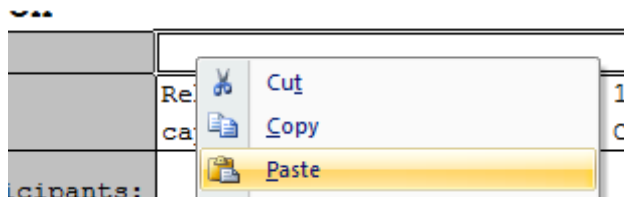
This button populates the table with the previous project that is on the filtered list in the All Projects worksheet. If the User is on the first project in the list, clicking Previous will populate information from the last project on the filtered list.

Copying / Pasting into Excel may cause the destination cell(s) to lock. Please paste directly to the formula bar to prevent possible locking of the project entry cells.

Good (Pasting into Formula Bar):



Not Recommended (Pasting into Cell):



6.1 Modifying Existing Projects

The User may modify his or her Sponsor's project data simply by choosing the cell containing the information which needs to be modified. Some fields have drop-down lists and it is recommended to use the options in the drop-down boxes. If invalid entries have been made in a field with a drop-down list, the User must click on Cancel to clear the erroneous data in the cell. Clicking Retry will not clear the cell.

There are buttons on the **Project Entry** worksheet to assist the User while editing existing projects:

**What Cells
were
changed?**

This button enables the User to see which project data has changed and confirm that the changes are correct. Changes are indicated by cells highlighted in yellow.

Cancel Edit

This button will remove all changes made since it was last saved (either via the **Save Project** button). Utilize this button to erase unintended changes.

Save Project

This button will save the project data and should always be used after editing the project data and verifying the changes are correct. The Save Project button loads the changed data into the All Projects worksheet and automatically saves the TPPL Workbook to ensure the data is retained. As previously mentioned in Section 5.0, cells with updated data are highlighted in yellow in the **All Projects** worksheet.

6.2 Entering New Projects

New Project

This button will create a new project with the User's Sponsor., click the New Project button on the Project Entry worksheet.

As previously mentioned, "**Appendix A: Project Data Fields**" provides the description of each field in the project data. All cells marked with "**Req**" on the right of the table must contain data prior to saving the new project data. If left blank, the program will remind the User to enter data into that field.

Also previously mentioned, some fields have drop-down lists and it is recommended to use the options in the drop-down boxes. If invalid entries have been made in a field with a drop-down list, the User must click on Cancel to clear the erroneous data in the cell. Clicking Retry will not clear the cell.

When the User has completed entering the data for a New Project, the User should use the Save button to save the project data to the All Projects worksheet.

6.3 Submitting Updates to Energy Strategies

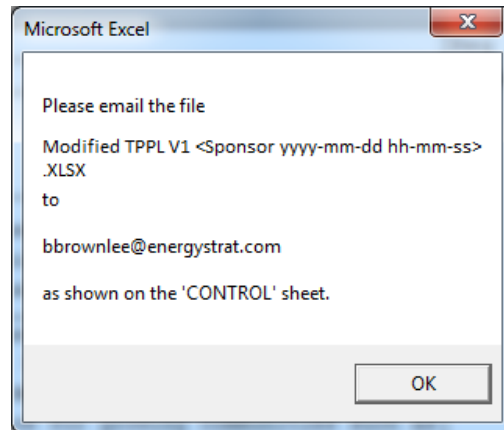
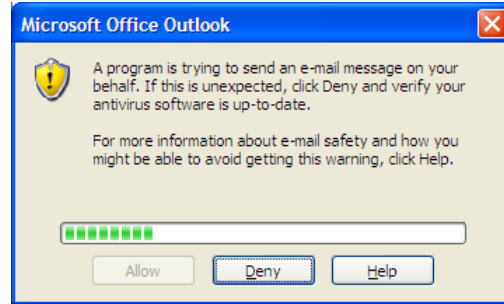
[Energy Strategies](#) for incorporation into the "master" TPPL Workbook.

Send

This button indicates that all saved project data changes should be submitted. All saved changes since the "Data last Sent by Sponsor" stamp on the **Control** worksheet will be placed in a new Excel file ("TPPL change file") which is saved in the same computer directory as the TPPL Workbook. This new file contains only the data that was added or changed.

Once the Send button is clicked, the User will be guided through how to send the TPPL change file to [Energy Strategies](#) based on the settings in the **Control** worksheet:

- If “Save and Email” (*the default setting*) is selected on the **Control** worksheet, then the User will be prompted to allow the TPPL change file to be sent via MS Outlook as shown in the screenshot on the right. If an error is encountered, refer to the next bullet.
- If “Save” is selected on the **Control** worksheet, then the User will be prompted to manually send the TPPL change file to [Energy Strategies](#) as seen in the screenshot on the right.



6.4 Additional functionality available on the “Project Entry” Worksheet

Spell Check

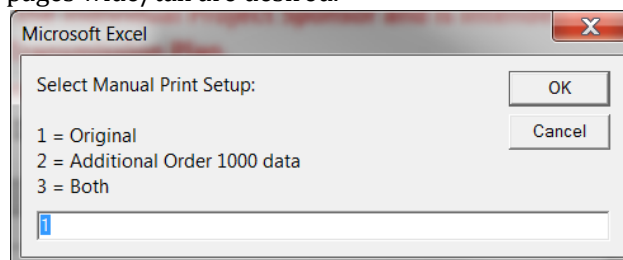
Clicking this button will start the MS Excel spell checker function. It will only look at the current project displayed in the Project Entry table.

Print

Clicking this button enables the User to print the project currently displayed in the Project Entry table. The printed page will be in the format on the Report Page worksheet. The Print button utilizes the Excel print options.

**Set Range for Manual Print
(See cells A92:G95)**

Clicking this button enables setting the print area for the **Project Entry** worksheet data for manual printing using the print functionality built into Excel. The User will be given 3 options for setting the print area as shown in the screenshot below. Additional cells referenced within the button allow the User to dynamically control the print parameters for manual printing such as the page header, cell range, and how many pages wide/tall are desired.



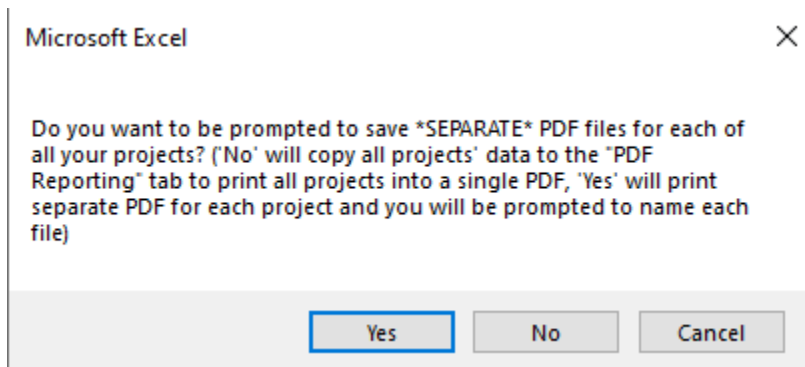
7.0 The “Report Page” Worksheet

To view a project in the format that can be found in the WestConnect Annual 10-Year Plan, the User can view the Report Page worksheet. The User cannot edit the project data from this worksheet.

The print buttons on the Report Page worksheet utilize the Excel print options.

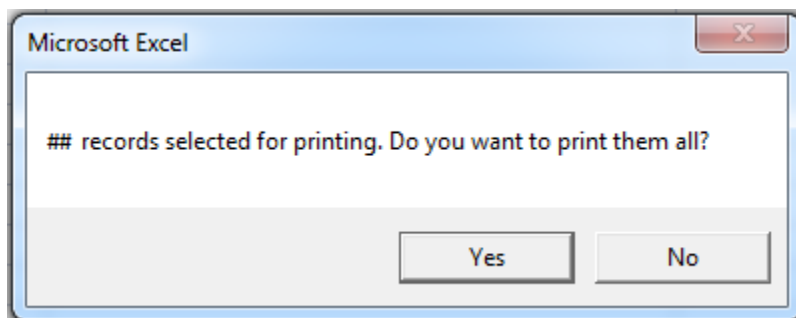
There are two options for printing that the User can choose:

Print Current	Clicking this button enables the User to print the project currently displayed.
Print Selected Projects on All Projects Sheet	Clicking on this button enables the User to select where to print the projects. <u>Care should be taken</u> if the User modifies the filter and displays all of the projects. The User will be prompted as <u>shown below</u> :



Cancel: This will cancel the print request and the dialog will close.

Yes: The program will print all of a Sponsor’s projects listed on the All Projects worksheet to the local printer. **Note that if your local printer is set to a PDF printer, then you will be prompted to name EACH file since this prints each project data sheet individually.**

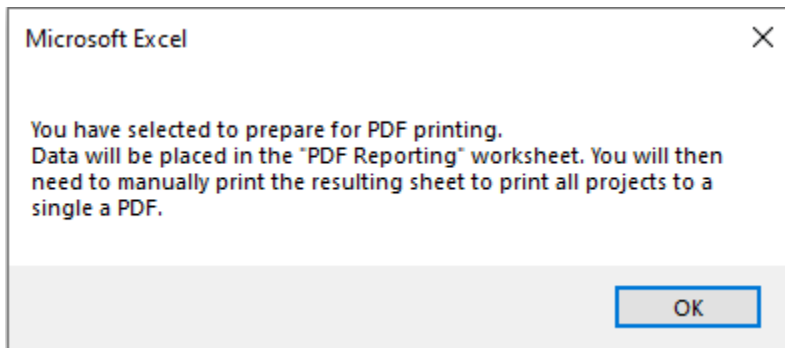


“##” will be the number of project selected (i.e., filtered on) in the All Projects worksheet.

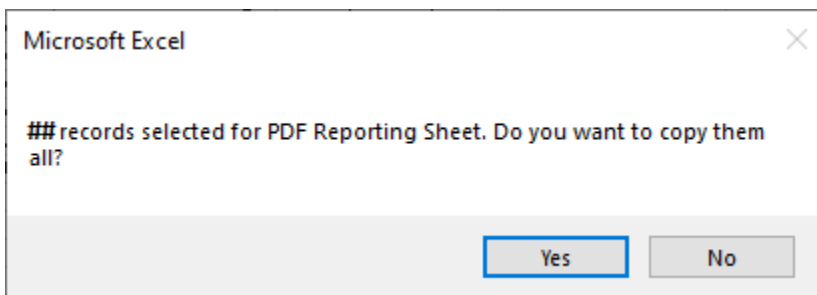
Yes: The user will be prompted with the Excel Print dialog to finalize the print.

No: The dialog will close.

No: The program will respond:



Click Ok.



“##” will be the number of project selected (i.e., filtered on) in the All Projects worksheet.

Yes: each selected project, in the format of the Print Page, will be copied to the PDF Reporting worksheet with page breaks separating each project. The User can then use the Excel print options to print file to a printer or a pdf file. This worksheet is not protected and can be manipulated as needed by the User.

No: The dialog will close.

8.0 Process for Updating Master Project List

[Energy Strategies](#) will use a macro-enabled workbook called “TPPL Merge” to merge the TPPL change files received from Users (see Section 6.3: Submitting Updates to Energy Strategies). The merge process allows [Energy Strategies](#) to review the submitted TPPL change files in synchronization with updates to the master TPPL Workbook. This provides for immediate coordination with Users and Sponsors, if necessary, to discuss any observed anomalies in the data. Project modifications are accepted based on the timestamp of the modification. Should an older modification be missed and a newer modification get loaded first, the older modification (which was already incorporated in the newer modification) is not loaded due to the timestamp of the modification; however, other modifications in the file will be loaded based on the same timestamp test. Once a modification file is fully processed it is moved to an archive folder. The cell highlighting and data history contained in the TPPL change file is not loaded into the master TPPL Workbook.

This process allows [Energy Strategies](#) to refuse the merging of a modification if for some reason the data appears to be corrupted or looks questionable. The file remains in the process folder and can be reprocessed later to accept the rejected modification after conferring with the User and Sponsor.

Another major advantage of the TPPL Merge workbook is facilitation of handling multiple modified files in a session through interaction with only a single file, minimizing the potential for overlooking any submitted updates. The TPPL Merge workbook’s systematic approach helps ensure timely and accurate releases of the master TPPL Workbook.

Appendix A: Project Data Fields

Populating the TPPL Workbook Project Entry Table. Importantly, the TPPL is not for generator project(s) **unless** the generator project(s) are specifically related to an Independent Transmission Developer (ITD) transmission project (refer the “Information for Applying ITD Generation Criteria” portion of the data required for ITDs below in order for the questions in this regard). For Transmission Owner with Load-Serving Obligation (TOLSO) entities, only the transmission facilities on the TOLSO system related to a generation or load interconnection should be entered – i.e., for generation or load interconnections to the TOLSO system, only the transmission facilities on the TOLSO side of the point-of-interconnection (POI) should be submitted by TOLSO entities. Outlined below are examples to help TOLSO entities with this distinction. This is not an exhaustive list and TOLSOs should ask if they are unsure so WestConnect can determine what to do in special cases that may not have been dealt with before.

- Example transmission facilities related to a load or generation interconnection which TOLSOs **should not** submit into the TPPL (i.e., load or generation facilities’ side of the POI):
 - Generation plant or load customer substation
 - Tie-line between TOLSO system and generation plant or load customer substation
- Example transmission facilities related to a load or generation interconnection which are appropriate for TOLSOs to submit into the TPPL (i.e., TOLSO’s side of the POI):
 - In general, a network upgrade on the TOLSO’s system needed in conjunction with a generation or load interconnection
 - New switching station or substation created as part of one or more generation interconnections, including the TOLSO needing to bifurcate an existing transmission line or building a new line to connect the new station to the rest of the TOLSO’s system
 - New transformer, breaker, voltage support, or other substation equipment within the TOLSO’s system that enables load or generation interconnection(s)
 - New line or a line reconductor

Data Required for All Projects

WestConnect Project ID	WestConnect Project IDs are generated by the program. The Project ID is a combination of the Project In-Service Year (TBD if unknown) followed by a unique number which is assigned in numerical order as projects are entered. A new project may have an ID of 2015--1 for example. The double dashes appear because the spreadsheet assigns the sequential portion of the ID as a negative number temporarily. When Energy Strategies reads-in the new project, a permanent Project ID will be assigned.
Project Name	Sponsor/User determines name
Project Sponsor (Entity)	Auto-filled with Sponsors name

General Information

Project Description	Summarize the project's general scope of work. The focus is on the major electrical features of the project.
Project Purpose	Summarize what the project accomplishes or fixes. Examples: thermal overloads, contingency voltage problems, contingency overloads, equipment failure, replacement, load growth.
Drivers of Project	Explain the needs driving the project
If your company is a TOLSO, is this project needed to meet currently enacted public policy requirement(s)? (Put "N/A" if not a TOLSO)	Yes/No
If your company is a TOLSO, what specific enacted public policies would no longer be met without this project? (Put "N/A" if no associated public policies)	List applicable public policies.
Facility Type	This represents the type of facilities to be built (drop-down): <ul style="list-style-type: none"> • Transmission Line • Transmission Line and Substation • Substation • Transformer • Distribution • Other
Primary Project Voltage	Enter nominal kV for project (drop-down): 600 kV DC 500 kV DC 500 kV AC 345 kV 230 kV 161 kV 138 kV 115 kV Below 115 kV TBD
Estimated Transfer Capability/Rating (MW)	Enter rating in MW. If you wish to specify this in other units (e.g., MVA, MVAR) then include those units as part of your entry.

General Information

Project Development Status:	<p>Identify status project from a planning perspective.</p> <ul style="list-style-type: none"> • Withdrawn*: Cancelled, postponed, no active development • In-service*: Commercial operation • Under Construction*: Actively under construction. • Planned: Expected to be in-service during the approaching 10-years and meets the below criteria within that timeframe: <ol style="list-style-type: none"> 1. Project is required to meet public policy requirements; OR 2. Project has a sponsor and is incorporated in an entity's regulatory filings or capital budget; OR 3. Project has an agreement committing entities to participate and construct. • Conceptual: Active development, but not meeting requirements for Planned project (<i>Specific requirement for non-TOLSO</i>) <p>*Applies only to projects currently in TPPL. For example, do not enter every operational line in your system. These fields are for projects that were previously tracked and now have an updated status.</p>
Project Origin Point/Location	Enter substation name if known or general vicinity (city, landmark, etc)
Project Termination Point	For transmission lines, enter substation name(s) if known or general vicinity (city, landmark, etc)
Project In-Service Year	Enter expected year project will be in-service. If unknown, use TBD
Subregional Planning Group(s)	Enter SPG(s) that project will be part of. This is needed for reporting purposes (drop-down)

Additional Information

Is Sponsor a WestConnect TOLSO?	Yes / No
Project Contact Name	Identifies Project Manager
Project Contact Phone	Project Manager's phone number
Project Contact Email	Project Manager's email address
Date Last Modified	The program displays the last time this project was updated by the User

Data Required for Independent Transmission Developers

Additional Order 1000 Data (Required for Independent Transmission Developers)

Information for Applying ITD Transmission Criteria

Project Map URL	Include if project map has a website location
Has a system impact study been completed which has been approved by all interconnecting system facility owner(s) and affected system owner(s)?	Yes No
If the project has undergone a system impact study, does the project definition provided above include any and all infrastructure required to mitigate the surrounding system impact of the project in accordance with applicable NERC criteria?	Yes No
Has the project been assumed in service for the purposes of a WestConnect TOLSO Member's local planning process? List all TO Members that apply.	List the WestConnect TOLSO Member(s) whose local planning processes the project is assumed in service in
Has the project executed construction or EPC (Engineering, Procurement, Construction) contracts of at least 50% of the project's total construction/EPC costs? ¹	Yes No
If yes, describe the financial arrangements that enabled the project to execute the contracts.	Describe the financial arrangements that enabled the project to execute the contracts.
If yes, provide details regarding the construction commitments (e.g., contractor, start date).	Provide details regarding the construction commitments (e.g., contractor, start date).
Does the project have executed binding transmission service agreements (TSAs) with credit-worthy counterparties that allow the project developer to recover at least 70% of the revenue requirement of the project? ²	Yes No
If yes, and: <ul style="list-style-type: none"> ▪ The project developer is FERC-jurisdictional, please provide the date(s) the TSAs were either filed with FERC or included in the developer's Electric Quarterly Reports, as applicable OR ▪ The project developer is not FERC-jurisdictional, provide the date(s) of when the TSAs were executed 	Provide the date of the executed transmission service agreement.

¹ 50% is used to ensure the project would have completed the engineering work and would have procured a significant amount of equipment. In the PMC Issue 33 Work Group discussions in 2021, the involved independent developers agreed that a developer would not stop developing a project once 50% of the capital of the project was at risk. PMC approved this in their [meeting on October 20, 2021](#).

² 70% is used to ensure the developer could recover the non-equity components of the revenue requirement (e.g., debt, depreciation, taxes, O&M) of the project. In other words, the project can move forward with no return on equity. PMC approved this in their [meeting on October 20, 2021](#) based on the final recommendation of the PMC Issue 33 Work Group discussions in 2021.

Additional Order 1000 Data (Required for Independent Transmission Developers)

Information for Applying ITD Transmission Criteria

Is/are federal permit(s) required for the project?	Yes No
If yes, has a ROD been issued?	
Is/are state permit(s) required for the project?	Yes No
If yes, has/have all necessary permits been obtained?	

Additional Order 1000 Data (Required for Independent Transmission Developers)

Information for Applying ITD Generation Criteria

Note that WestConnect will only model generation that has binding transmission service agreements with all WestConnect member entities, as applicable, along the path from source to sink, or at least as far as the WestConnect planning region boundary, and that has an interconnection agreement with the interconnecting transmission provider, which is either executed or filed with FERC.

- The transmission developer must submit models for any network upgrades required to satisfy the transmission service agreements executed by the generation.
- The transmission developer must submit generator model(s) consistent with the models used for the generator's interconnection agreement(s). Models of interconnection facilities and any network upgrades required to mitigate the impact of the generation to the interconnecting system(s) and any affected systems, in accordance with applicable NERC criteria, must also be submitted to WestConnect.

Does the non-TOLSO transmission project have associated generation that is requested to be modeled in the WestConnect base cases?	Yes No
Provide the generation capacity (MW)	Provide the generation capacity (MW)
Provide the generation technology(ies)	Provide the generation technology(ies)
Provide the generation point-of-interconnection.	Provide the generation point-of-interconnection.
Provide the sink of the generation (general area, not necessarily a specific load serving entity) to WestConnect, for modeling purposes.	Provide the sink of the generation (general area, not necessarily a specific load serving entity) to WestConnect, for modeling purposes.
Does the generation have binding, FERC approved, transmission service agreements with all WestConnect member entities, as applicable, along the path from source to sink, or at least as far as the WestConnect planning region boundary, including with the non-TOLSO transmission project?	Yes No
Does the generator developer have an interconnection agreement with the interconnecting transmission provider, which is either executed or filed with FERC?	Yes No

Additional Order 1000 Data (Required for Independent Transmission Developers)

Additional Information

Provide any further information or detail about the project for consideration in WestConnect's Regional Transmission Planning Process.	Provide any further information you believe to be relevant.
Project Contact Street Address	Project Manager's Street Address
Project Contact City	Project Manager's City
Project Contact Country	Project Manager's Country
Project Contact State/Province	Project Manager's State
Project Contact Zip	Project Manager's Zip Code
Project Contact Name (2)	Identifies Second Project Manager contact
Project Contact Email (2)	Second Project Manager's Email Address
Project Contact Street Address (2)	Second Project Manager's Street Address
Project Contact City (2)	Second Project Manager's City
Project Contact Country (2)	Second Project Manager's Country
Project Contact State/Province (2)	Second Project Manager's State
Project Contact Zip (2)	Second Project Manager's Zip Code
Project Contact Phone Number (2)	Second Project Manager's Phone Number